

# Castles S1F2 For Retail

Next generation mobile terminal



Castles Technology's newly designed S1F2 next generation mobile terminal offers multifunctional capabilities and optimises the checkout process for your business.

It comes with several optional features including 4G LTE/3G, WLAN, Bluetooth, microphone, rear camera, barcode reader, and stylus.

The S1F2 is based on a secure Android platform and has an integrated contactless reader function with a 5.5" full touchscreen. The S1F2 is an extremely easy, safe and secure for merchants looking for a next generation payment terminal.

## Features

- 5.5" Colour Touch Screen
- Secure Android Platform
- Unprecedented Security and Certifications
- Incredibly Adaptable
- Exceptional Performance
- Rear Camera (Optional)
- Barcode Reader (Optional)

## Easy to Set Up:

The PAYA Group Team will make sure your device is set up and ready to use straight out of the box, saving you time and ensuring you're ready to accept card payments right away. All you need to do is connect to Wi-Fi or 4G connection.



**Includes  
Payment App**



**Includes  
Charging Cradle**



## Full Support

Our Helpdesk are on hand for any assistance you may need: 0333 123 1243

## PAYA Group Services

- We manage the application for your merchant account.
- We set-up your Merchant Portal and allow you to track your donations.
- We supply the contactless donation boxes.
- We provide UK based on-going support.

## Single Provider. Merchant Account. Merchant Portal. UK Support.

PAYA Group provides everything you need in one place, making it easier to set-up and manage your services and avoiding the complexity of multiple suppliers.

In addition to the latest technology, we offer a choice of device types, free set-up and an Merchant Portal to manage your services, transactions, box settings and campaigns in real-time.

## 100% Online Application

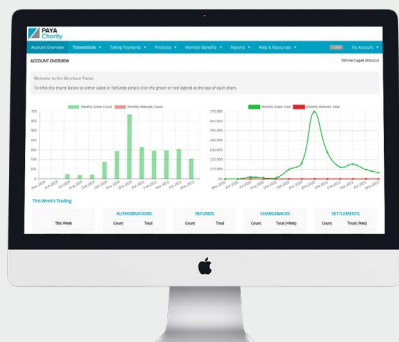
To get started visit our website and apply for a Merchant Account. The application is 100% online and there are no set up fees to pay.

Once we've approved your application, we'll contact you to arrange the delivery of your device(s).

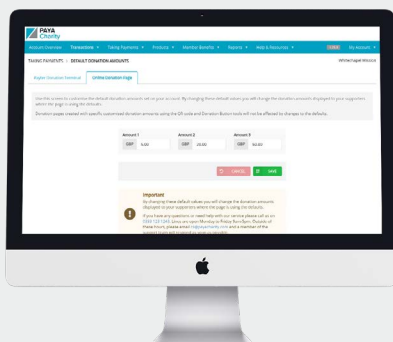
## Merchant Portal Features & Benefits

Once you have set up a PAYA Group account, you will be given access to the Merchant Portal. The Merchant Portal allows you to monitor the progress of your device performance.

Your transactions are viewable in graph and table form, giving you a quick visual summary of your transaction worth each month.



Track the performance of your donation boxes in real-time, adapting your campaign strategy to achieve optimal results.



Manage contactless box settings online. View transactions, order products, reconcile statements and more.

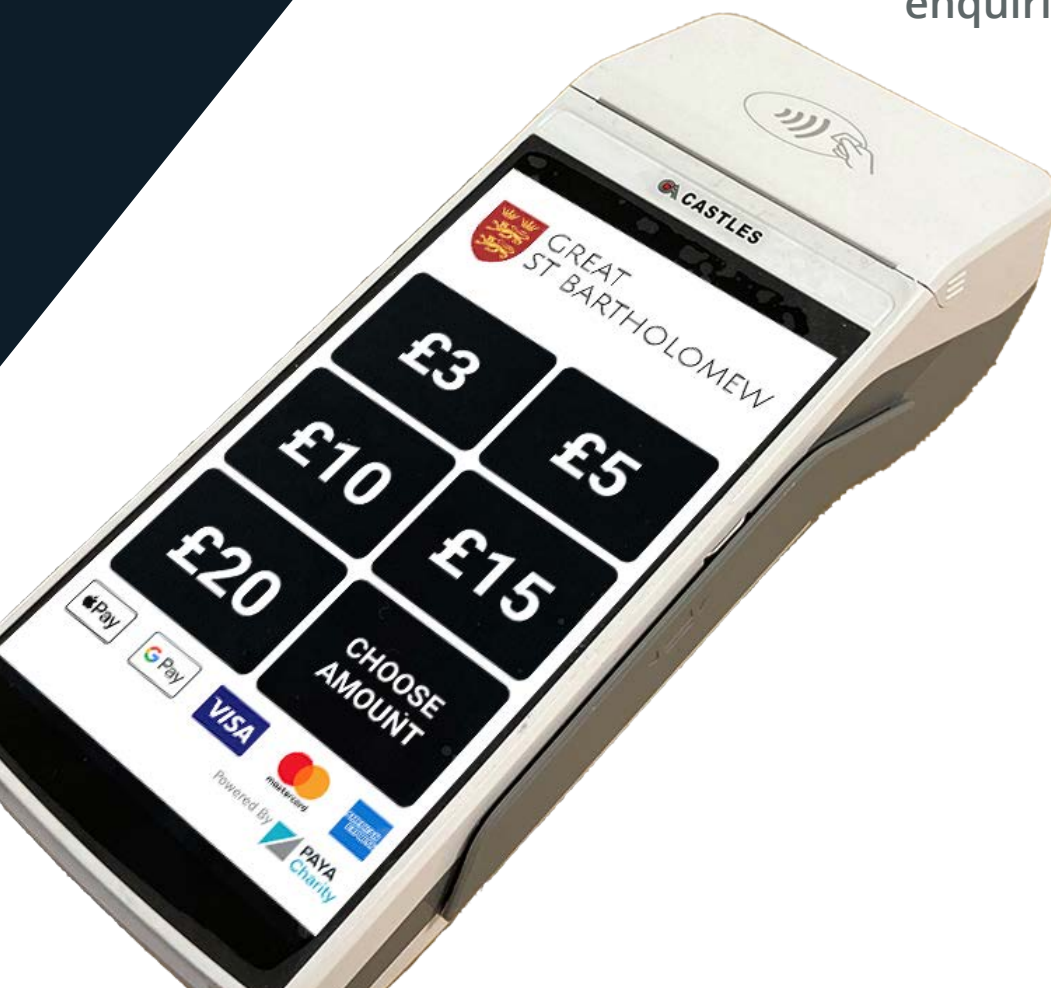
**Benefit from  
higher Volume,  
Higher Value  
Donations  
Today!**



0333 123 1243  
[www.payagroup.co.uk](http://www.payagroup.co.uk)  
[enquiries@payagroup.co.uk](mailto:enquiries@payagroup.co.uk)

Contact us for  
more information

0333 123 1243  
[www.payagroup.co.uk](http://www.payagroup.co.uk)  
[enquiries@payagroup.co.uk](mailto:enquiries@payagroup.co.uk)



0333 123 1243  
[www.payagroup.co.uk](http://www.payagroup.co.uk)  
[enquiries@payagroup.co.uk](mailto:enquiries@payagroup.co.uk)

